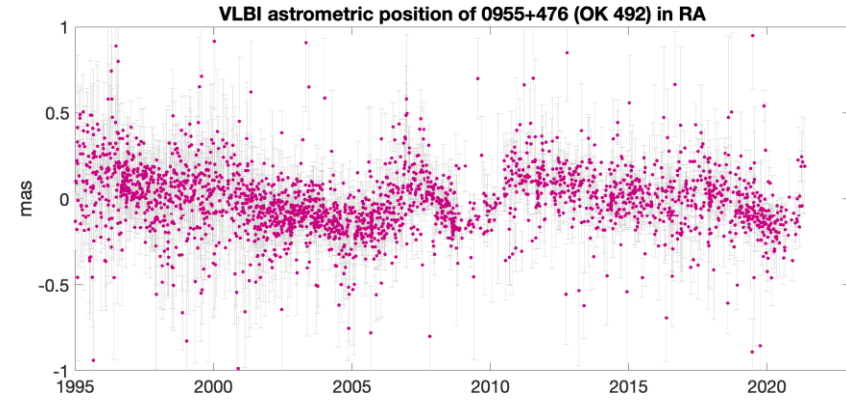
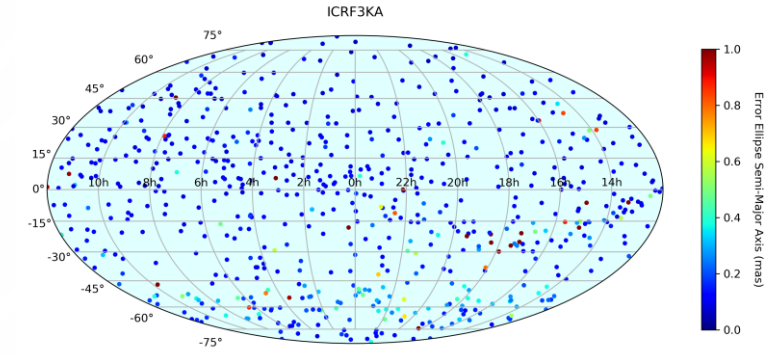
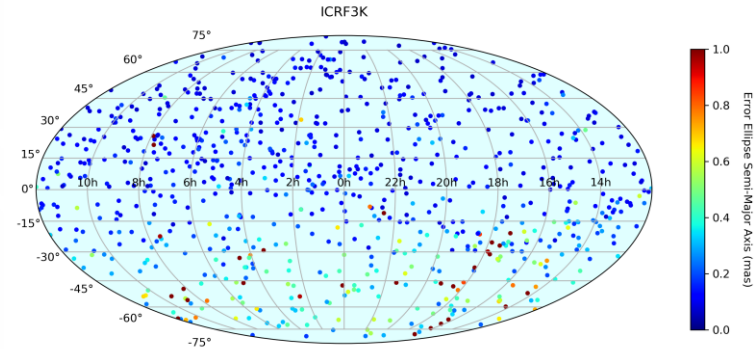
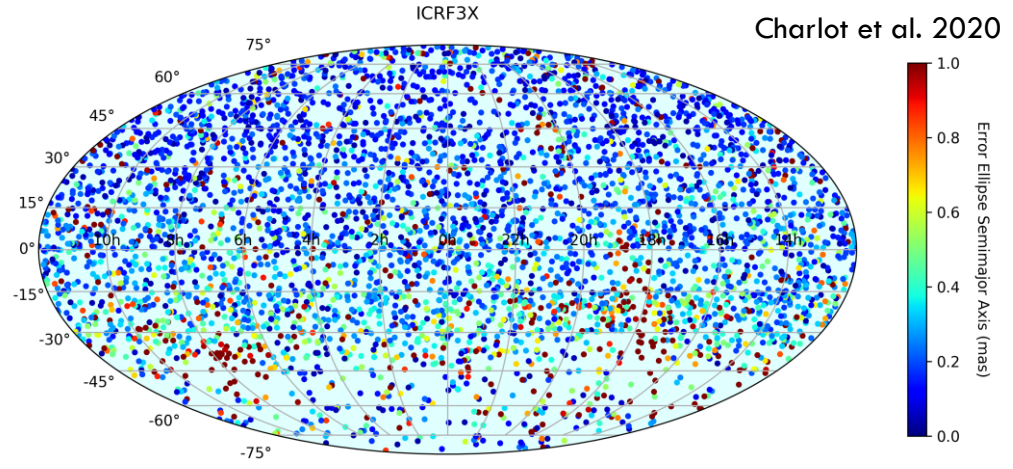
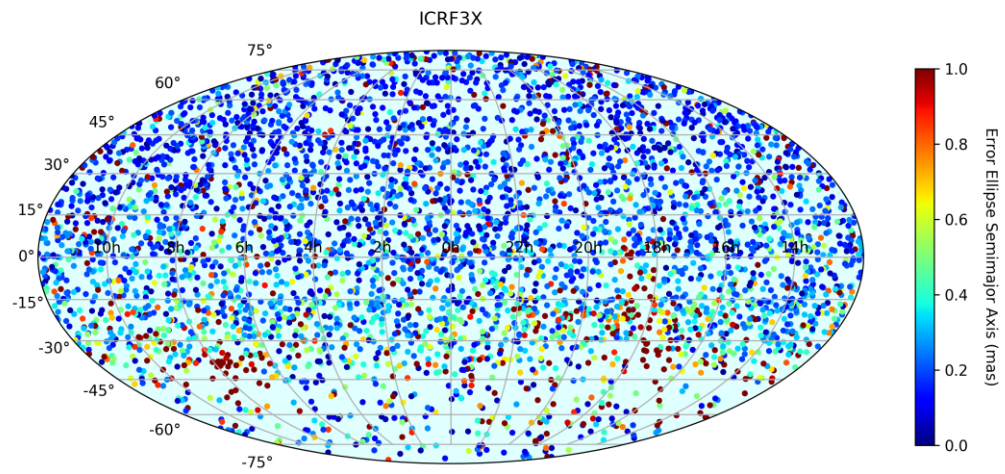


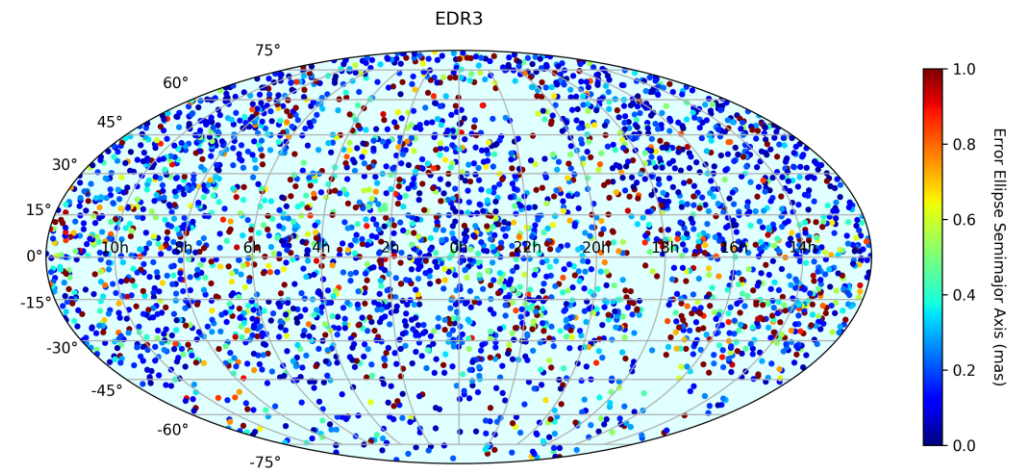
S. LAMBERT

SYRTE, OBSERVATOIRE DE PARIS, UNIVERSITE PSL, CNRS, SORBONNE UNIVERSITE

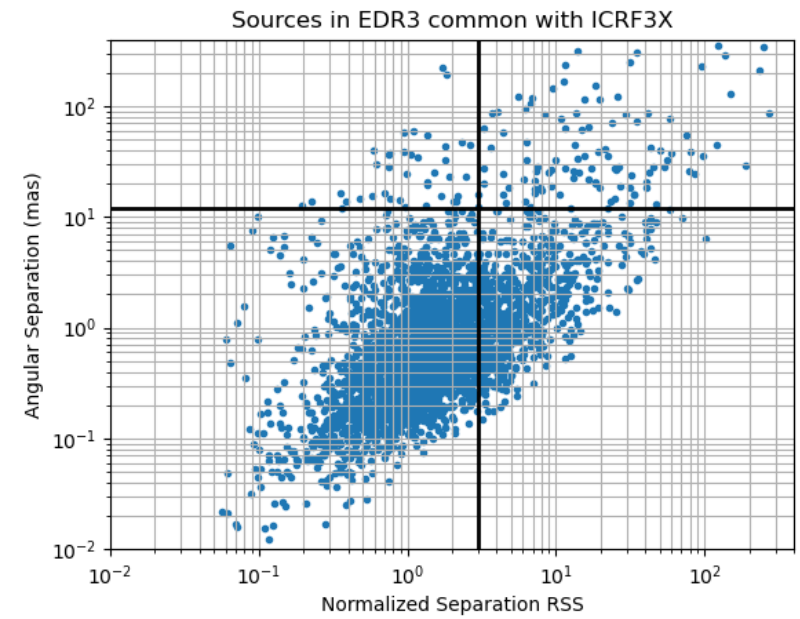




The ICRF3 at 8 GHz (4536 sources)



3500+ ICRF3-EDR3 common sources



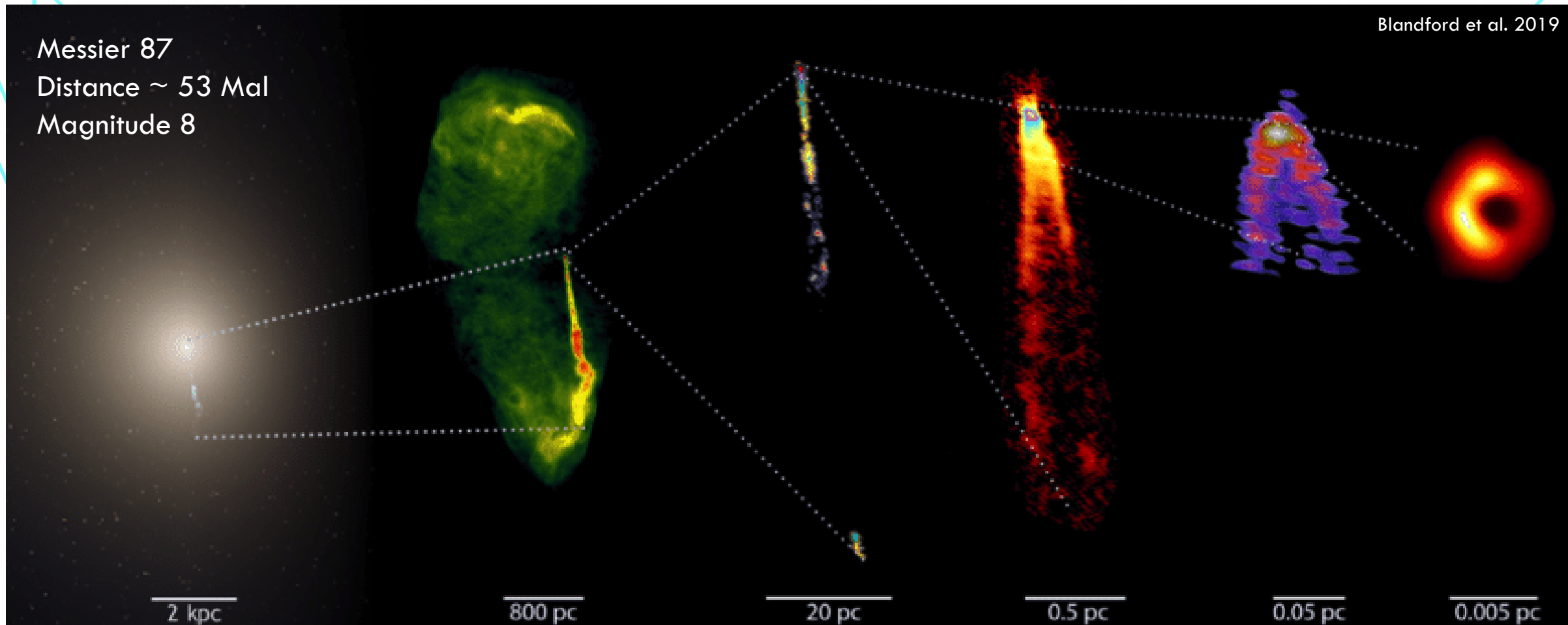
Charlot et al. 2020



Messier 87

Distance ~ 53 Mpc

Magnitude 8



2 kpc

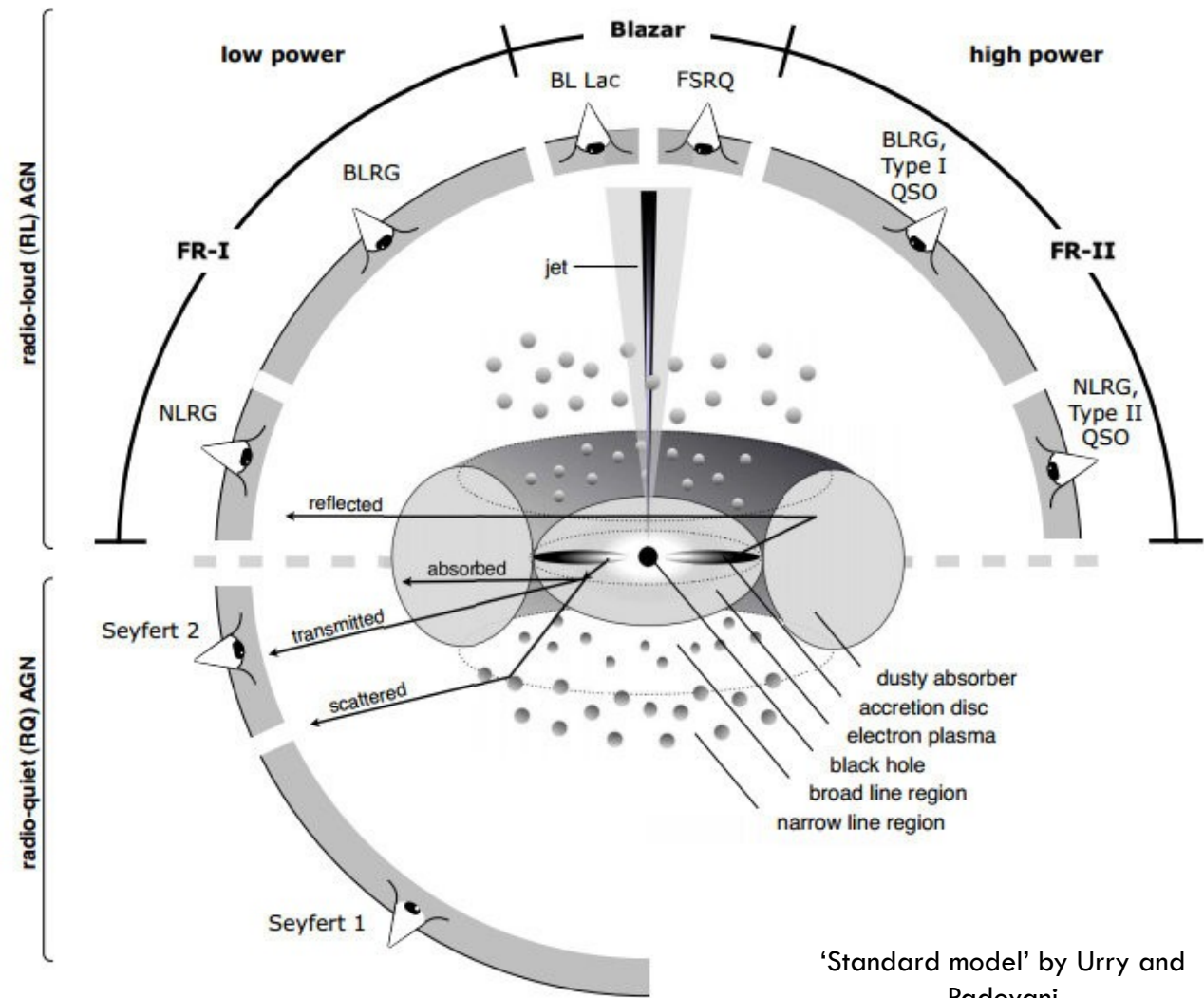
800 pc

20 pc

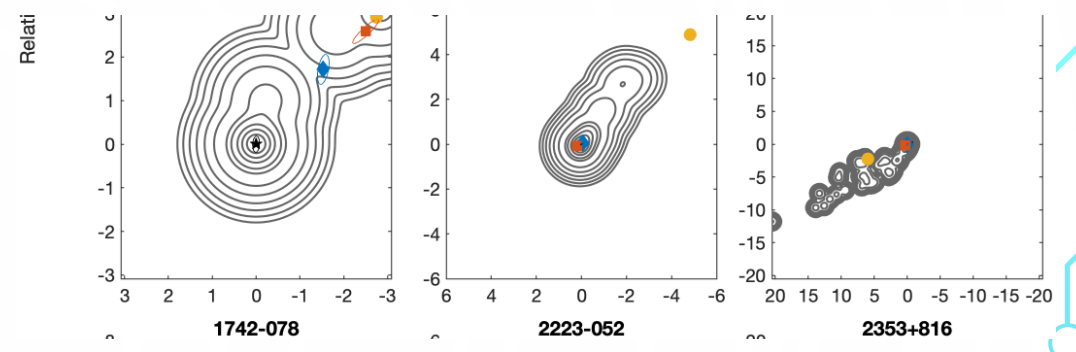
0.5 pc

0.05 pc

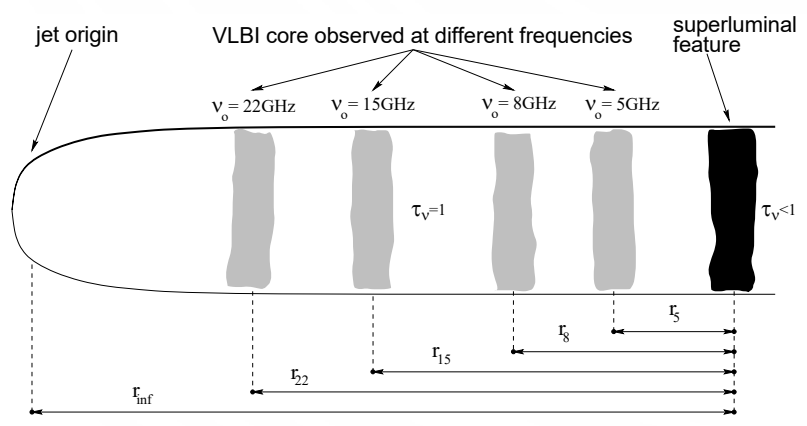
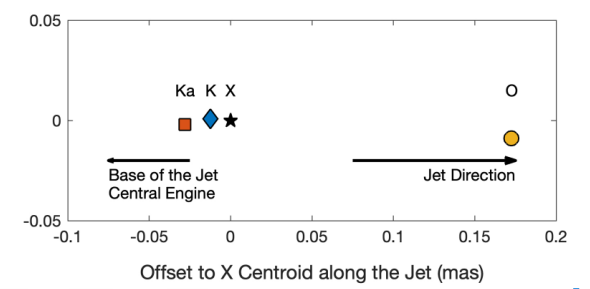
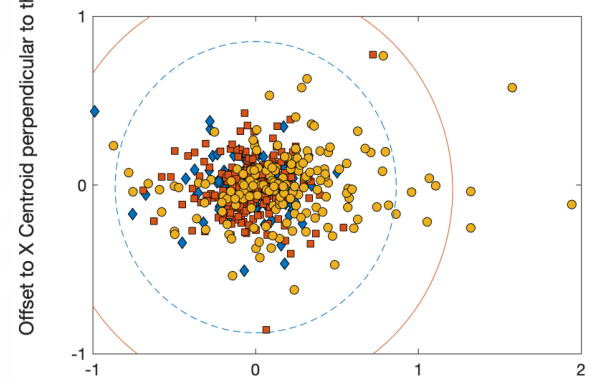
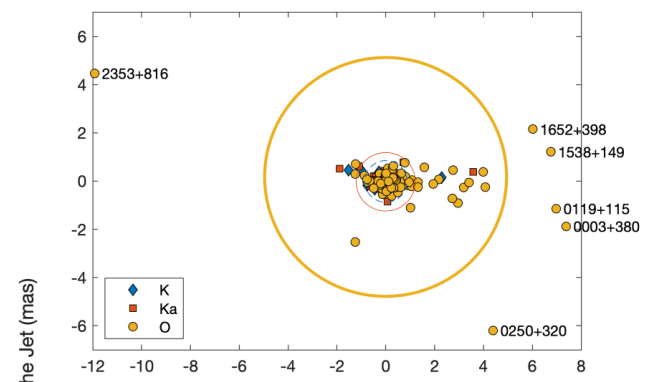
0.005 pc



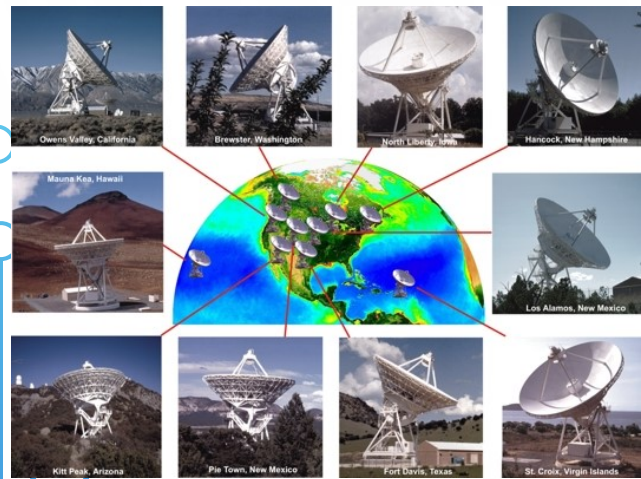
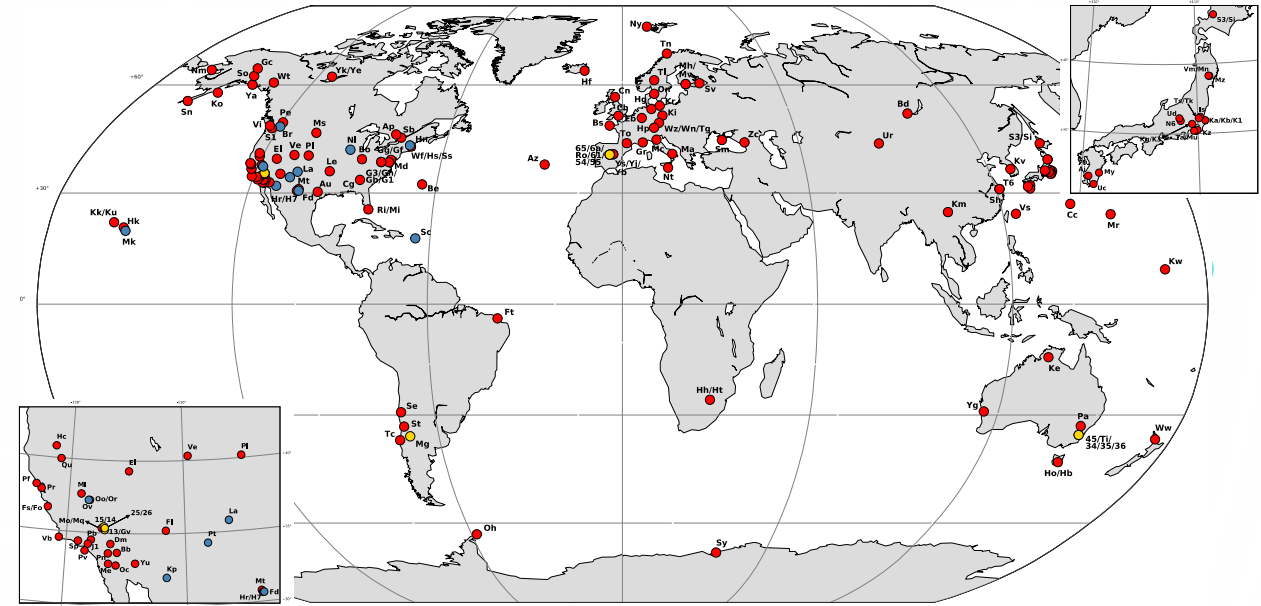
'Standard model' by Urry and Padovani



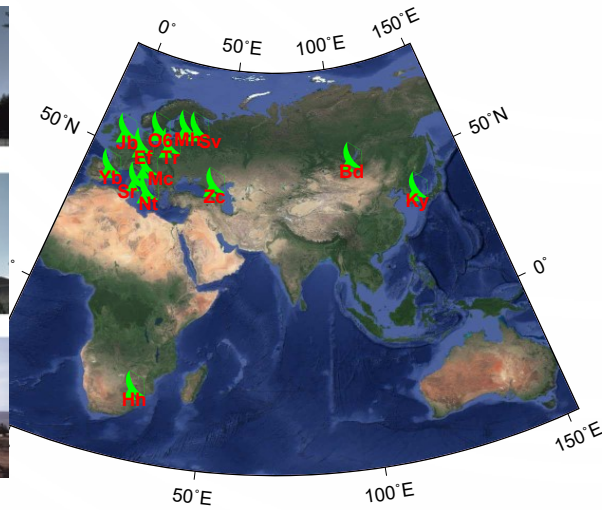
Lambert et al. 2021



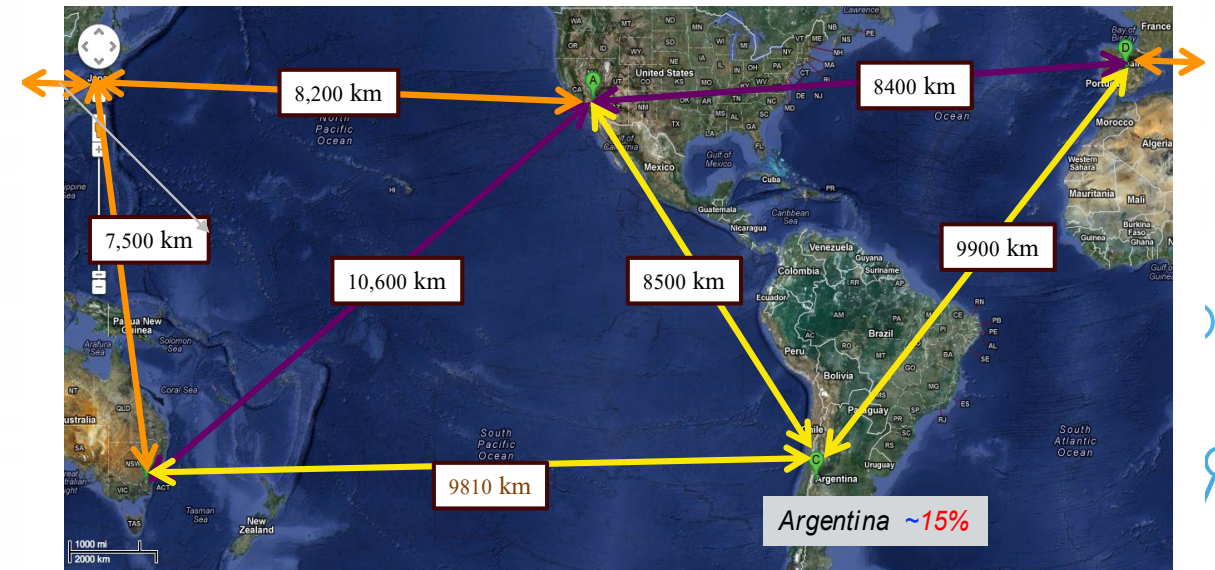
Kovalev et al. 2008



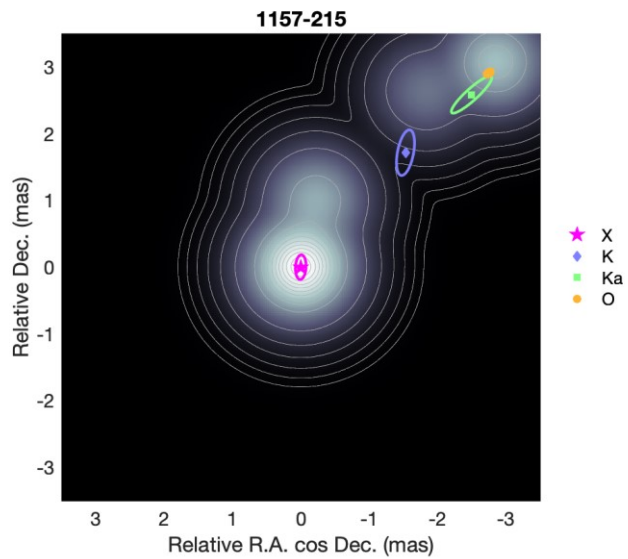
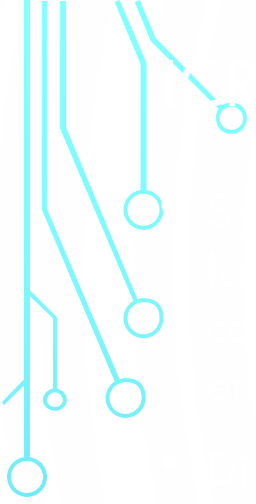
The VLBA network



An European K-band network; Gomez et al. 2019

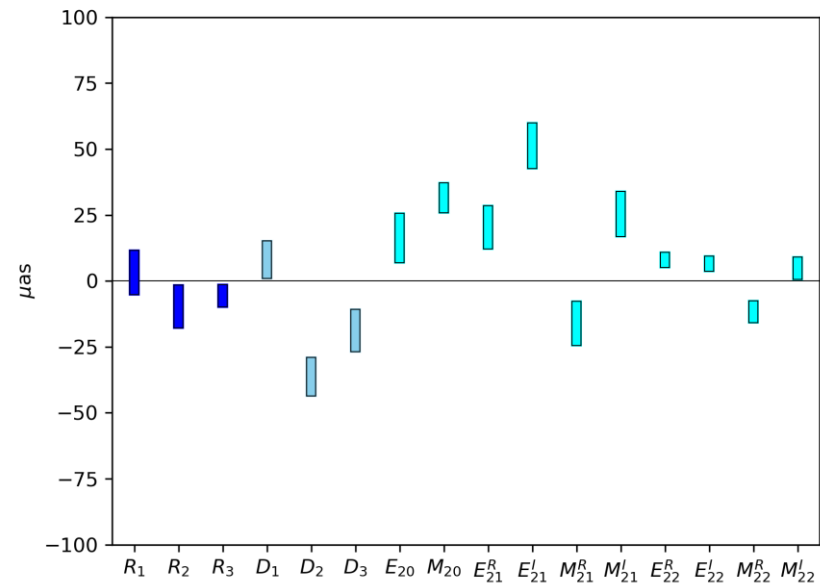


The X/Ka network; Jacobs et al. 2022

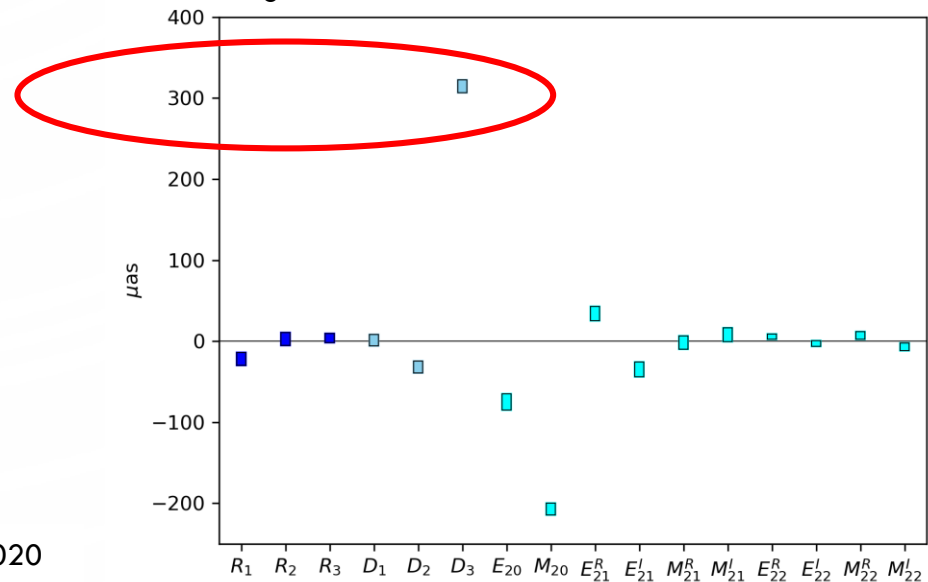


Lambert et al. 2021

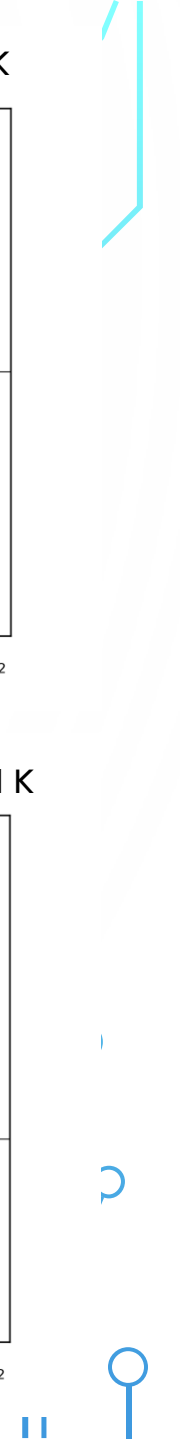
Large scale deformations between ICRF3 X and K

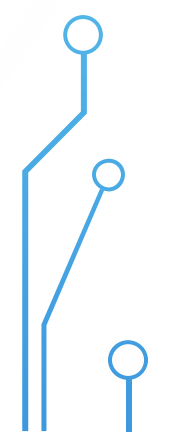
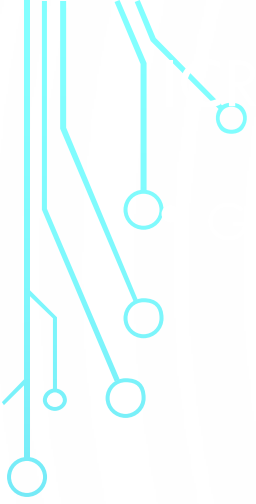


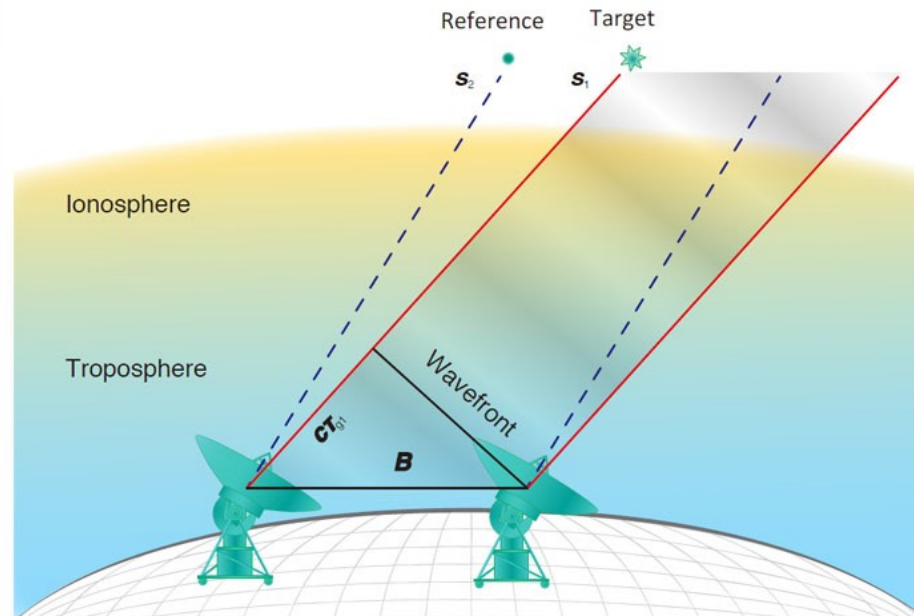
Large scale deformations between ICRF3 X and K



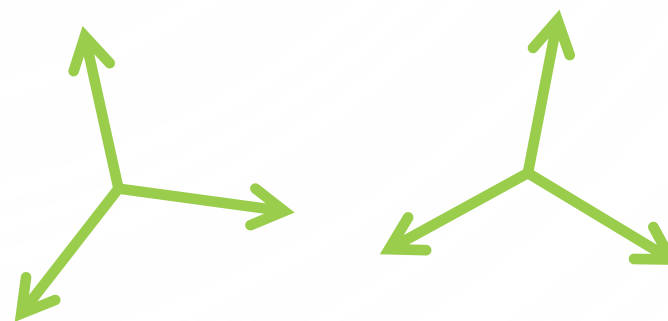
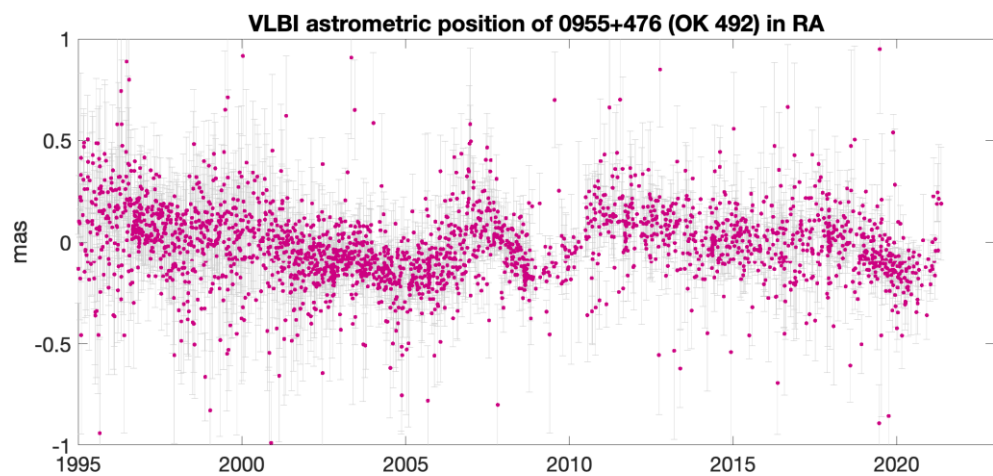
Charlot et al. 2020

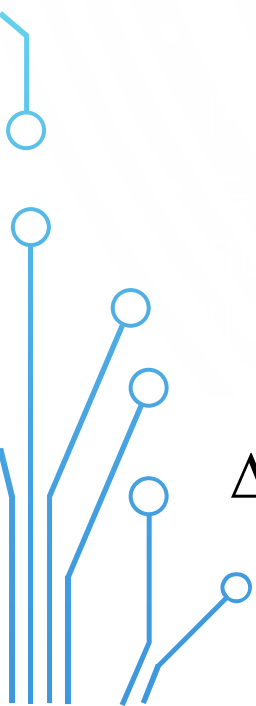
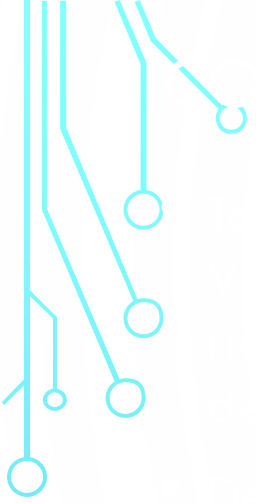






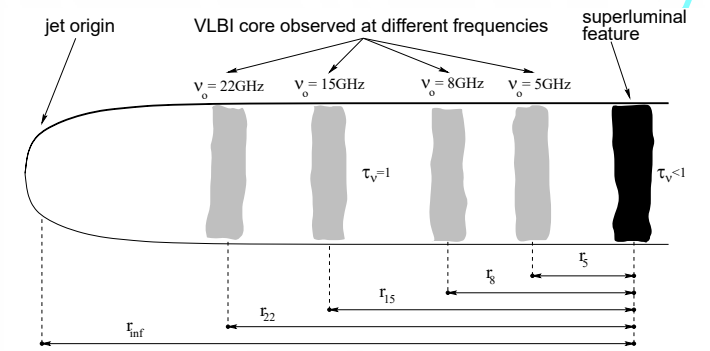
Reid and Honma 2014





$$\Delta r \propto \left(\delta_j^{3-\alpha} N_0 B_{\text{core}}^{1-\alpha} \beta_j^{-1} \Gamma_j^{-2} \right)^{2/3}$$

Lambert et al. 2021



Kovalev et al. 2008

